



Villa Agate , Sydney

BRILLIANT SEAVIEW VILLA

This beautiful family holiday house is located just a few meters from Newport Beach. There are very few places on the Northern Beaches that can cater for all family types and this house is one of them. One of Newport's most distinctive features is a broad flat rock platform at the south end of the beach.

As you open the front door, you are immediately welcomed into a fantastic open plan living Dining Kitchen area that flows out onto the front balcony. On this level, the master bedroom with ensuite and a 2nd bedroom as well with queen bed open out onto the outside terrace. Everything that you need for a perfect family.

LAYOUT

Main level :

- Flat level access from the driveway
- Bedroom 1 : master bedroom with ensuite
- Bedroom 2 : queen bed
- Open plan living Dining Kitchen area
- TV room

Lower level:

- Living area
- Bedroom 3
- Study area

Separate cabana :

- Teenager and child-friendly
- Living area
- Bedroom 4 : double bunk room with 4 single beds
- Small kitchenette
- Bathroom

Outdoor :

- Front balcony
- Terrace

FACTS

Prices from: upon request
Sleeps: 4 - 10 Guests
4 bedrooms

SERVICES INCLUDED

Concierge service

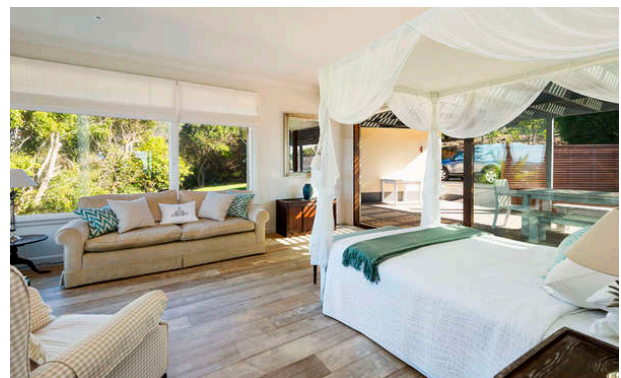
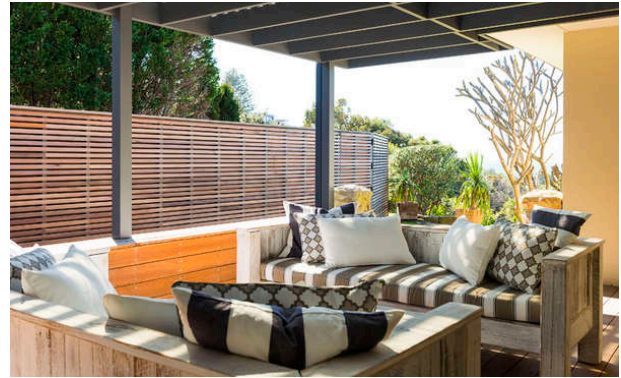
DISTANCES

Airport: Sydney Kingsford Smith International Airport , 1 hours by car
Town: 50 minutes by car
Beach: 10 minutes walk

PROPERTY FEATURES

TV
Wi-Fi
Childfriendly
Seaview

Villa Agate , Sydney



Villa Agate , Sydney

